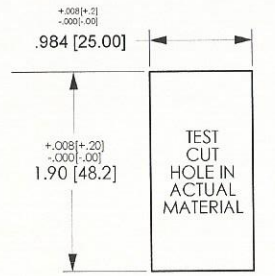
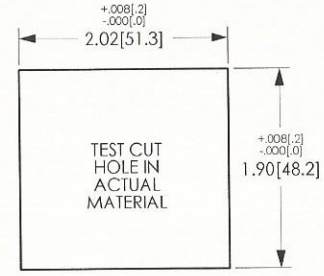


MOUNTING PANEL
 For additional units, add 1.03[26.2] per unit.
 For more than 2 V-Series Switches, add
 middle section. Available in Panel Thicknesses
 listed below.

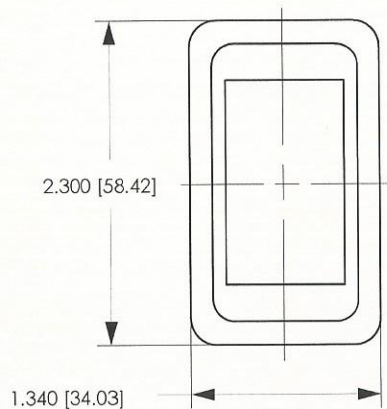
MOUNTING PANEL THICKNESS	
.062[1.57]	.187[4.75]
.093[2.36]	.250[6.35]
.125[3.17]	.375[9.52]



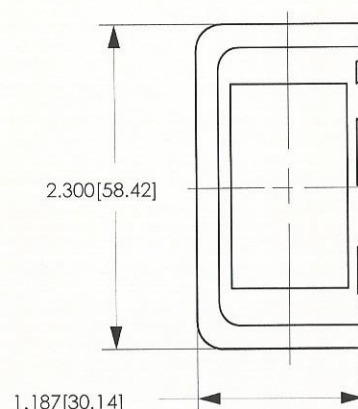
SINGLE
MOUNTING PANEL
HOLE



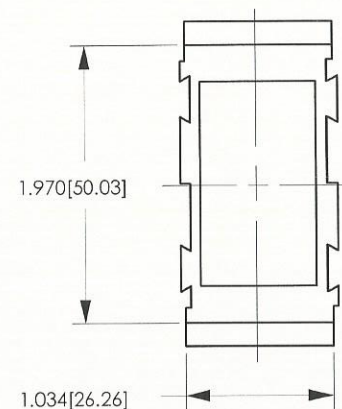
MOUNTING PANEL
OPENING
(2) UNITS



SINGLE
MOUNTING
PANEL



MOUNTING
PANEL END



MOUNTING PANEL
MIDDLE

SWITCH MOUNTING PANELS



614.834.5227