

Greg Hale Front Seat Adjustment Modification

The seat adjustment lever is a replacement for the "T" handles on the seat adjustment-latching pin.
The Adjustment Lever can be mounted on either side of the seat frame.



The seat adjustment mechanism has a spring inside that holds the latching pin in the seat adjustment track. Clamping the seat frame to a board, as shown, retracts the latching pin and allows the removal of the pin that holds the T-handle to the latching pin. After the T-handle has been removed, you can remove the front clamp.

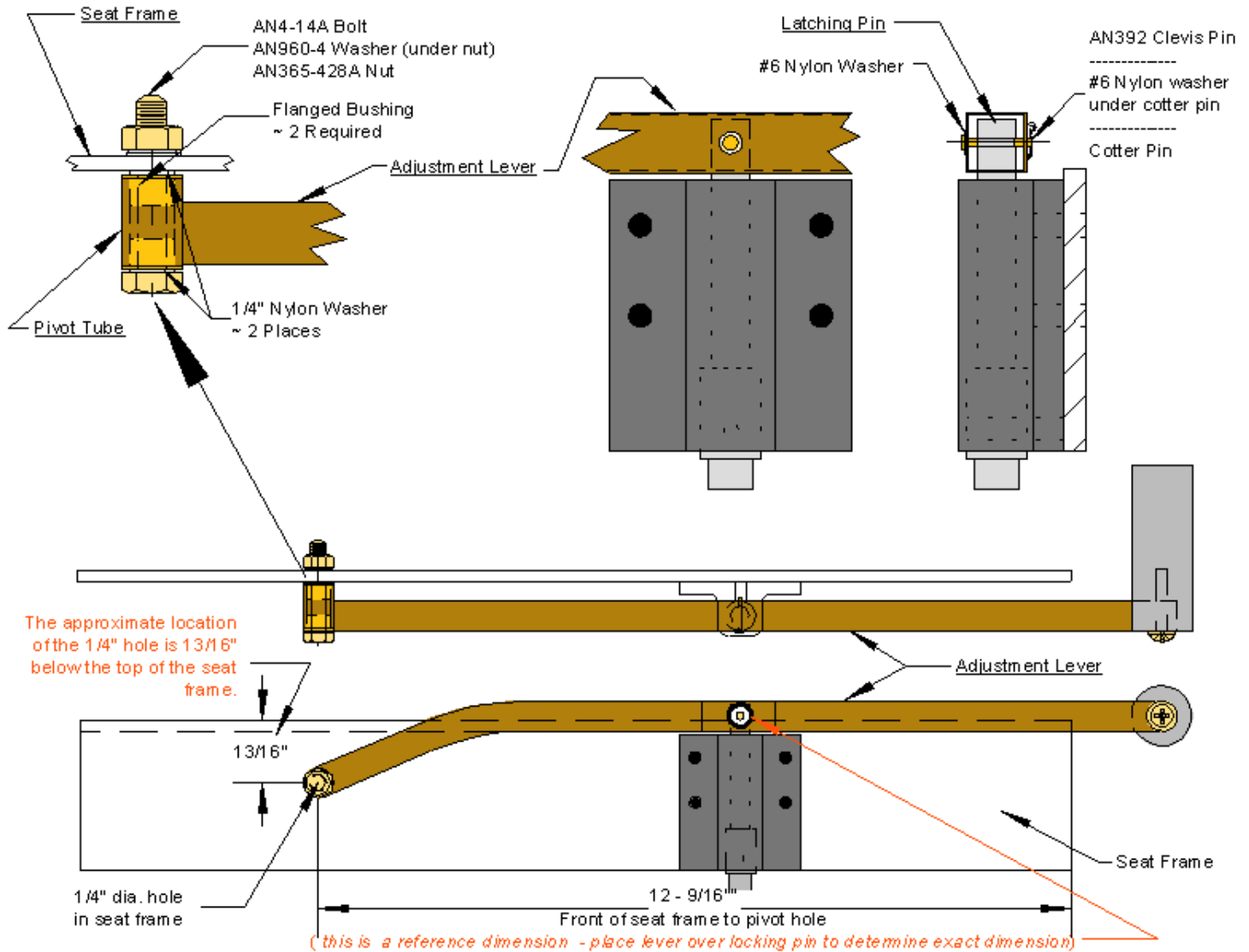


Using 1/8" diameter punch, remove pin from T-handle. Support the back side of the T-handle while moving the pin.



T-handle removed

Assembly Illustration



Place the adjustment lever over the latching pin. Position the lever to be level with the top of the seat frame. Using the pivot tube as a guide, trace the inside of the pivot tube onto the seat frame. Drill a 1/4" diameter hole at this location.



Install the Adjustment Lever to the latching pin:

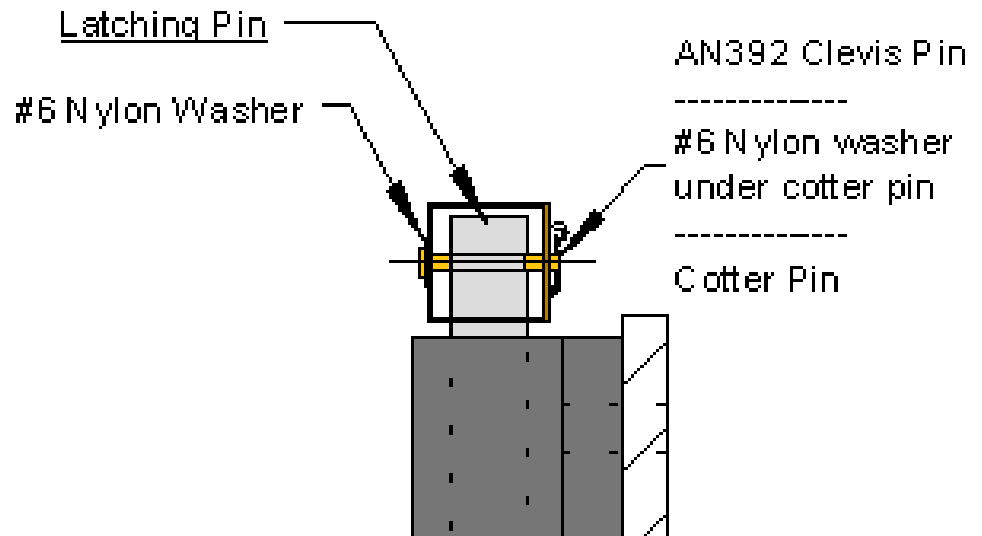
Place the Adjustment Lever over the latching pin assembly.

Install 1 - #6 Nylon washer under the head of the AN392 Clevis Pin.

Install the clevis pin through the Adjustment Lever.

Install 1 - #6 nylon washer over the clevis pin.

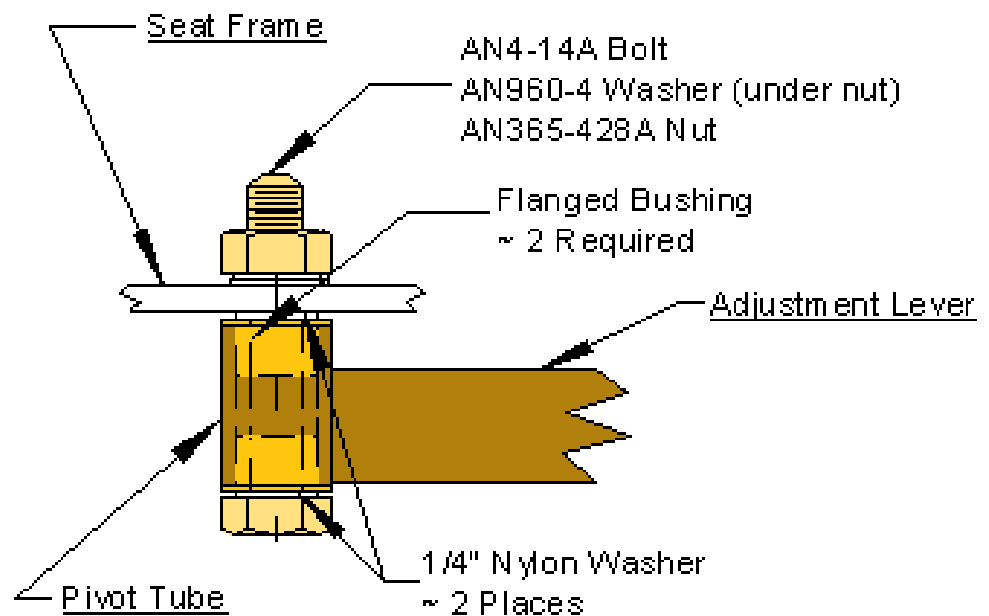
Install the supplied Cotter Pin through the clevis pin to secure it to the Adjustment Lever.



To attach the lever to the seat frame, install 2 flanged bushings in either end of the 1/2" pivot tube.

Install the supplied 1/4" nylon washer under the head of the 1/4" bolt and slide the bolt through the flanged bushing in the pivot tube.

Install another 1/4" nylon washer on the bolt and install the bolt assembly to the seat frame using an AN960-4 washer and AN365-428A nut. Tighten the nut so the lever has minimal side to side movement, but loose enough to pivot up and down.



Idea: When installing the seat in the aircraft it will be necessary to remove the latching pin assembly from the seat. You can install the clevis pin through the latching pin's 1/8" hole to prevent latching pin movement.

NOTE: The upward movement of the handle is approximately 1". Minimal upward force on the lever's handle is required to raise the Latching Pin out of the track



Side view of installed Adjustment Lever.

To simply installing the levers in the aircraft, you may want to replace the four attaching nuts with nutplates.



Looking down at the Adjustment Lever

List of Materials

Reqd	Description
2	Adjustment Levers
2	Machined Aluminum Knobs
2	Knob attaching screw
2	AN392-21 Clevis Pin
4	#6 Nylon washers
4	1/4" Nylon Washers
2	Cotter Pins
2	AN4-14A Bolts
2	AN960-4 Washers
2	AN365-428A Nuts
4	Flanged Bushings

Questions concerning installation can be sent to info@aerosportproducts.com