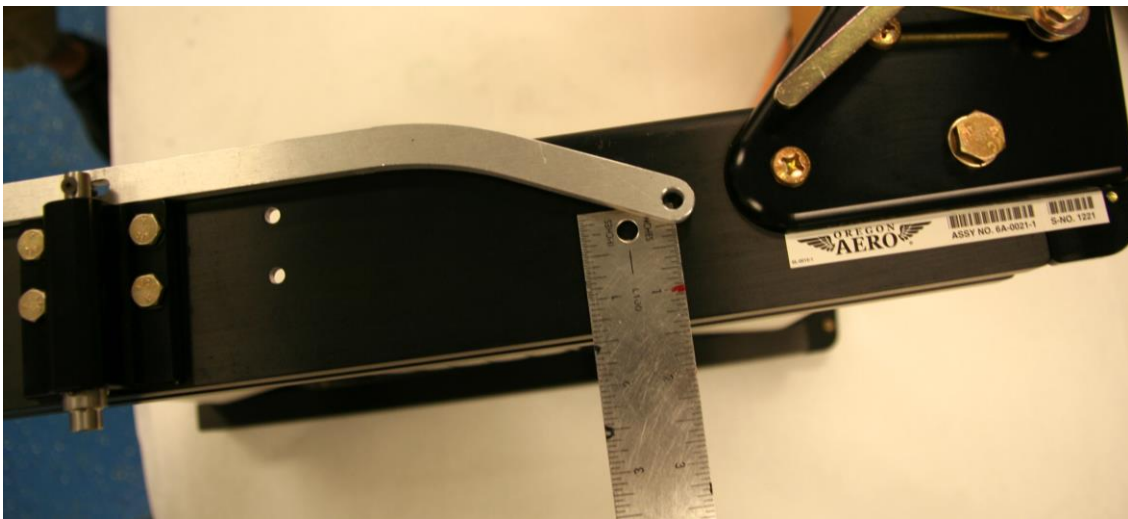
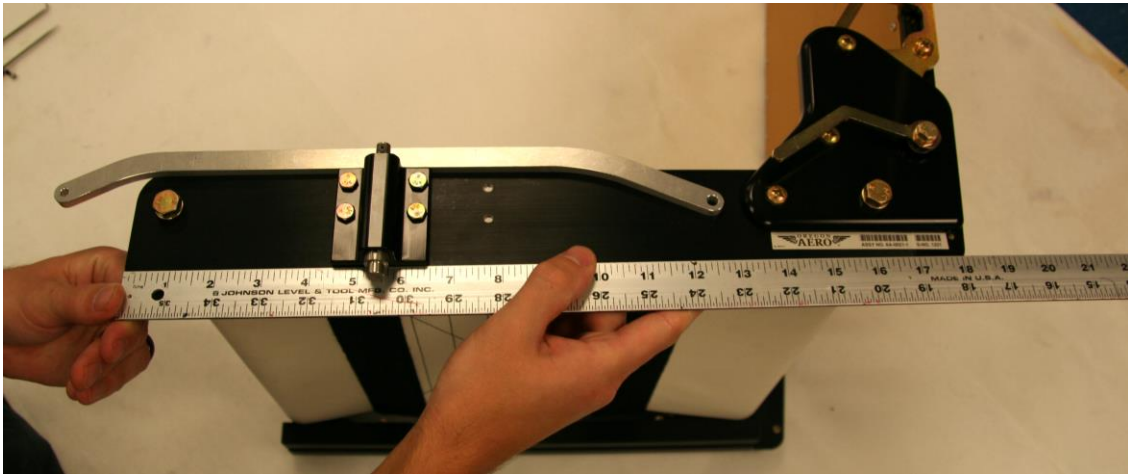


## *Aerosport Products RV-10 Seat Lever Kit*

1. Drive out the roll pin on the OEM handle. At this point the stock handle will be removable. Take off the handle.
2. One hole will need to be drilled. It needs to be 12 1/2" from the front of the seat frame and 1 7/16" up from the bottom of the seat frame. Mark the hole and align with the lever to double check for accuracy, adjust accordingly. This is where the single pivot bolt will go. See pictures.



3. The pivot bolt will be 1/4" AN4-6 w/shoulder bolt and two washers.
4. After you have your hole drilled you can fasten the pivot bolt.
5. At this point you will decide if you want to install with or without the original stock handle. You have been provided 5-40 hardware in both 3/4" and 1" length. This hardware will be used to link the OEM pin to the slot in the lever. Use the 3/4" length for install without the original handle OR use the 1" length to install with the handle.
6. Check the function and adjust accordingly to eliminate any unwanted slop or binding.

Email or call with any questions – [Info@AerosportProducts.com](mailto:Info@AerosportProducts.com) – 614-834-8659