



## Glare Shield Installation Instructions

Thank you for purchasing the Aerosport Glare Shield Cover. Please follow the instructions to insure the best fit and results.

### **Tools and Materials needed:**

Drill

#28 drill bit

Sharpie/Pen

Scissors

Side Cutters

Plastic spatula/flat blade

Phillips Screwdriver

½" Hook side Velcro with adhesive tape

Weather Stripping

1. Place top side of grab handle where the stock grab handles are on the Vans glare shield.  
You will drill two holes per handle using a #28 drill bit (clearance for a 6-32 screw)
  - a. Make sure the holes of the handle mating part align with the holes you just drilled.



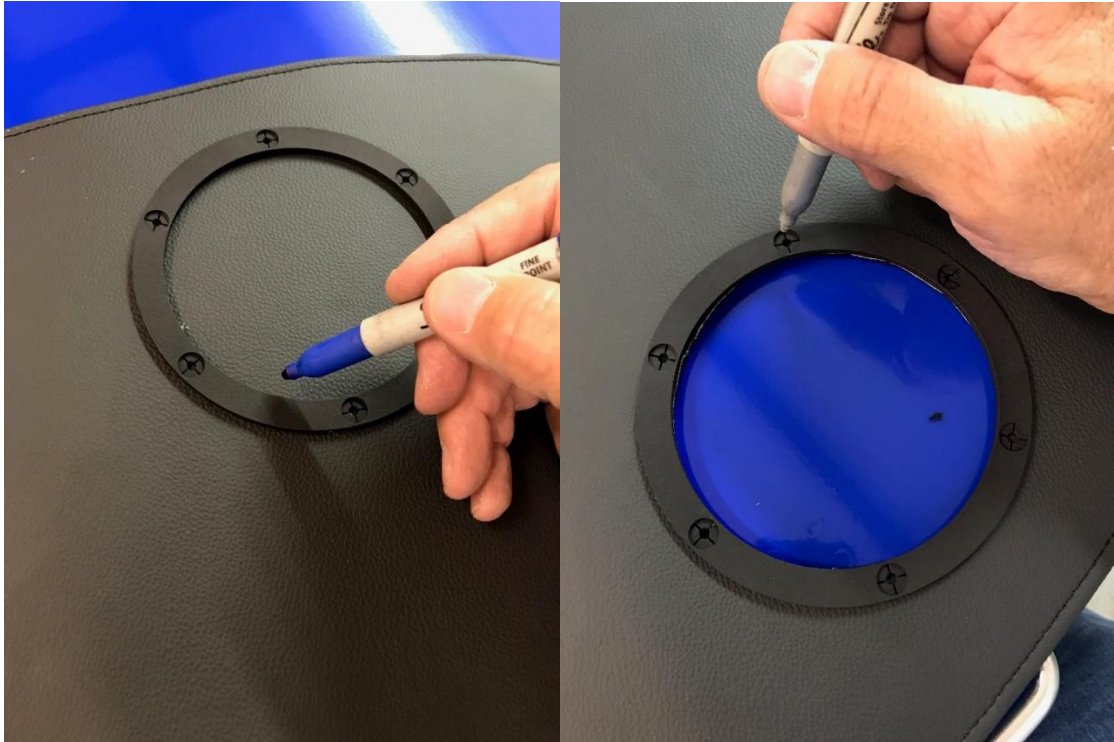
2. Add weather stripping to leading edge of dash.



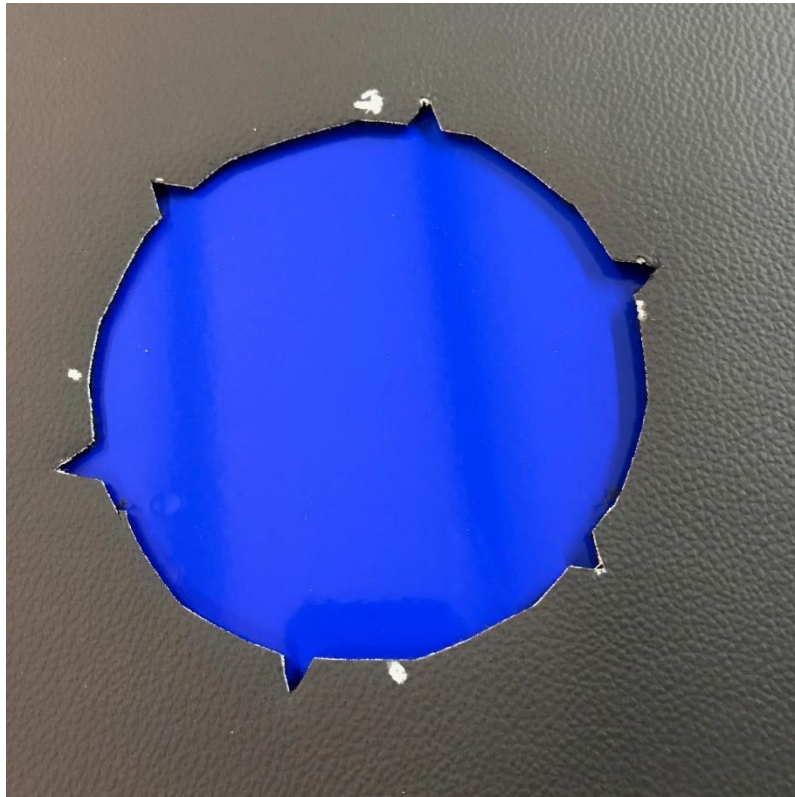
3. Next, align glare shield cover on dash.
  - a. Press down at defrost fan location and place a mark on the edge of the holes at 12 o'clock, 6, 3 and 9.



4. After marking both fan locations, remove the glare shield from the dash and place on a flat work surface.
5. Align the snap ring of the vent covers to your marks on the glare shield cover. Center best as possible.
6. Trace the inside of the ring with a pen/marker and place a dot in the center of each clip hole location.
  - a. TIP: Measure twice, cut once. Cut a small hole first in the center and check location.

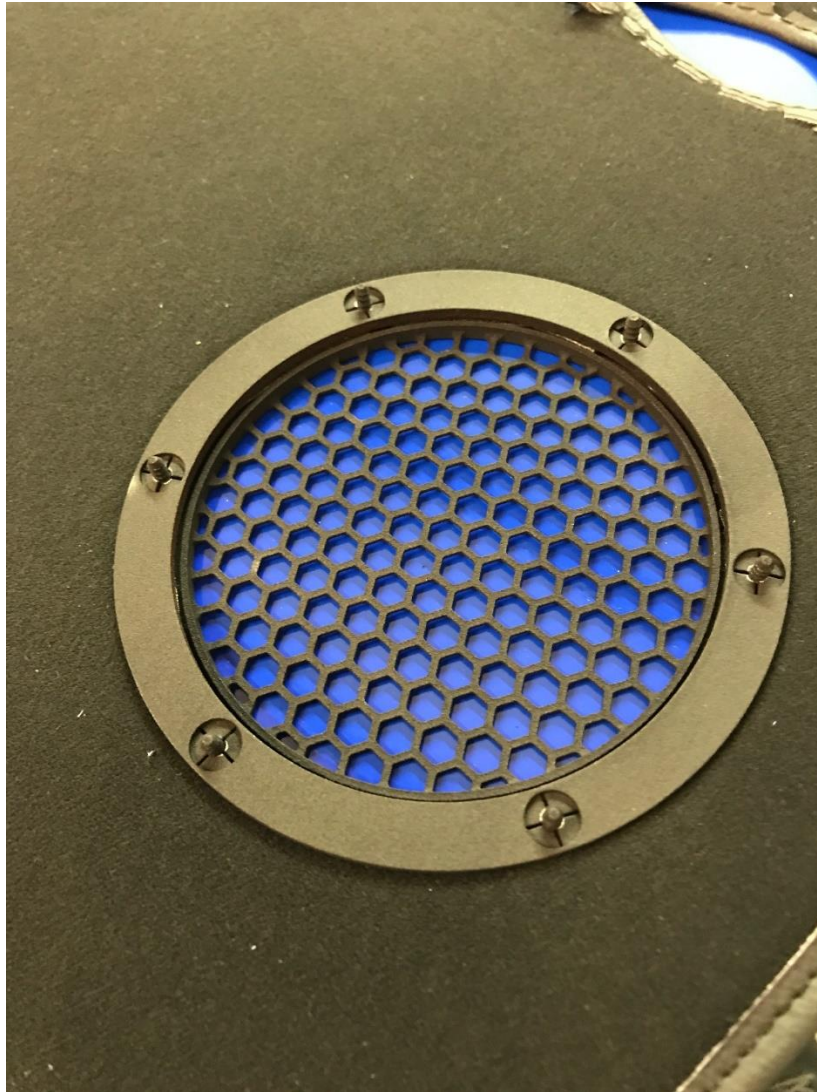


7. Cut out your traced hole and make V notches at each dot (the apex of the dot being the tip of the V).
  - a. TIP: Cut a slightly smaller hole to begin with. You can always take off more if you need to.





8. Flip glare shield cover over and place the vent cover on the underside of the cover. The pins should be in each V notch.
9. Place the snap ring over the pins. Make sure everything is aligned before pressing the snap ring down on the pins.
10. Press the trim ring down as far as it will go on the pins.



11. Trim the pins off flush with the snap ring using a pair of side cutters.

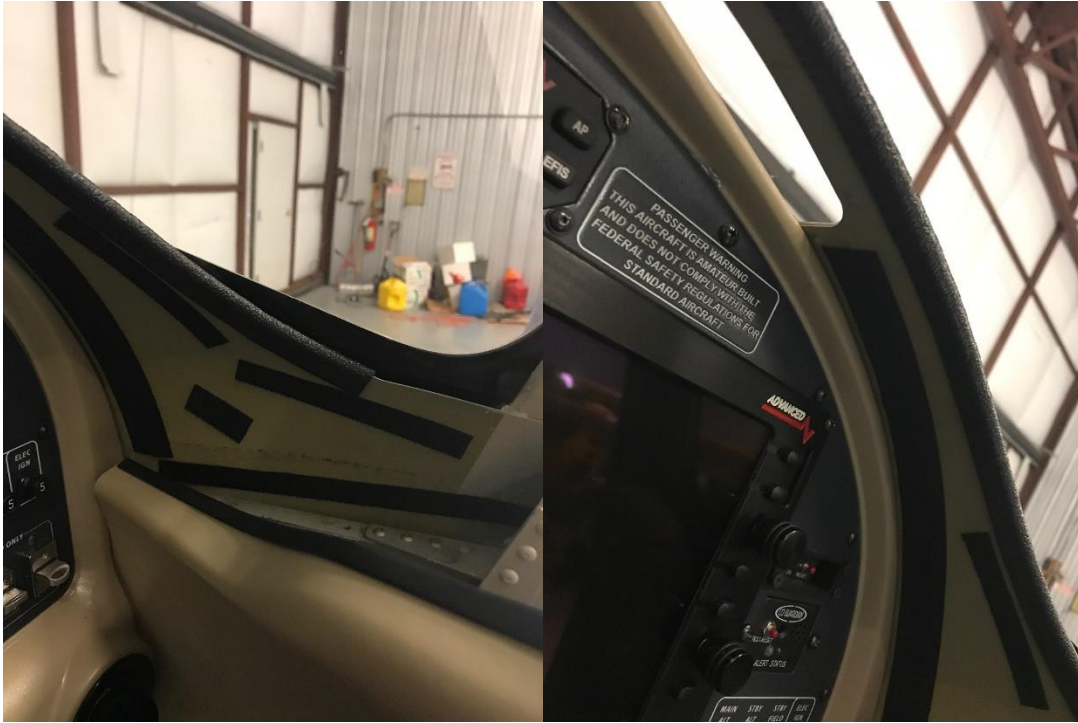




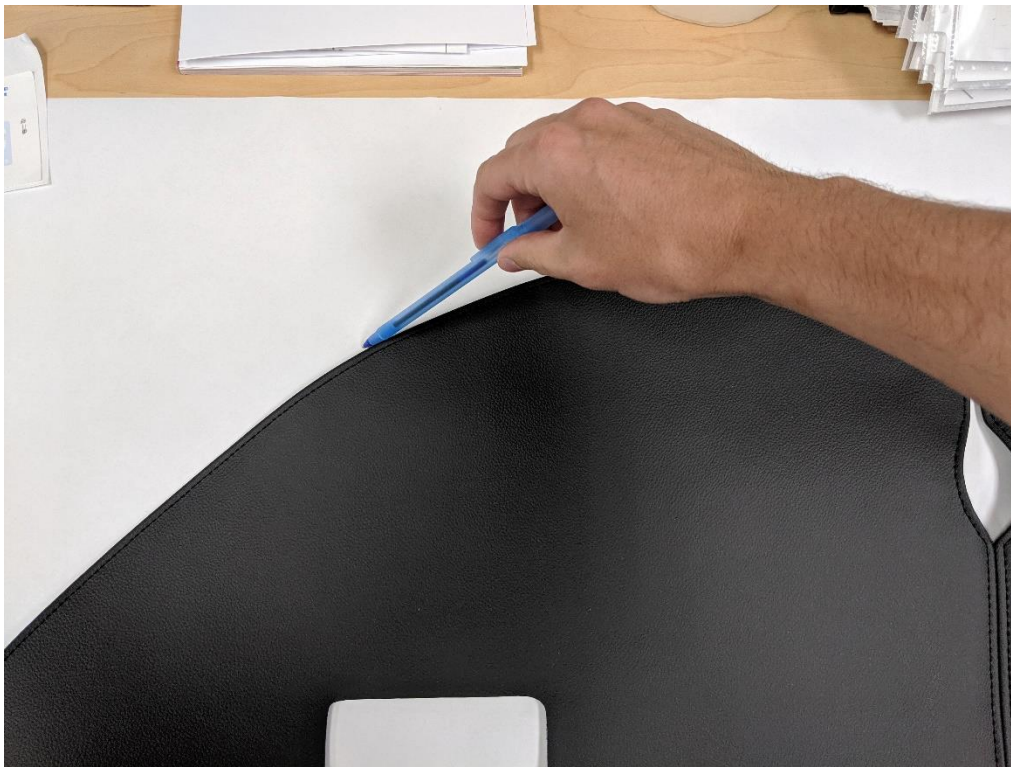
12. Place ½" x 1" pieces of hook Velcro with adhesive tape **(Not supplied)** 1" from front edge (windscreen side) and on just on either side of the center point of the dash (left and right of roll bar).
- a. We recommend no less than 5 pieces per side, but you can use more.
  - b. If you need to remove the glareshield from Velcro do not pull up. Use your hand and be very careful and slide your fingers or a thin piece of plastic to release the glareshield cover from the Velcro loop.
  - c. **DISREGARD IMAGE OF COVER ALREADY ON DASH (USED AS REFERENCE ONLY)**



13. Place hook Velcro with adhesive tape (**Not supplied**) on underside of dash in a similar manner shown in the images below:
- Place a piece of Velcro to the left and right of the center of the dash. This will hold the glare shield cover in place when wrapping over edge.



14. Place glare shield cover on paper supplied and trace the outside profile of the top dash area. This will act as a barrier when you place your cover onto the dash, and it won't get stuck to the Velcro immediately.
  - a. You will make 2 separate templates. One left and one right split from the center of the glare shield cover.
  - b. Cut out your traced templates and place them over top of dash That has hook Velcro installed.



15. Place glare shield cover over top of paper.
16. Working one side at a time, get glareshield aligned, press down on cover while pulling out the paper template towards you to ensure that the cover begins to lay flat.
  - a. Do this until the paper is all the way out and the cover is flat.
  - b. Repeat for the other side.
17. Wrap cover around leading edge of dash.
  - a. The edge of the dash should be in the middle of the French seam.

18. Wrap remainder of the cover to the underside of the dash.
  - a. If the cover is too long and overlaps the instrument panel, you can trim the excess off. Trim in between the sew lines to ensure that the material stays intact. You will want to wick the ends of the seams with thin super glue to prevent the thread from unraveling.
  - b. Make sure to leave at least  $\frac{1}{2}$ " to  $\frac{5}{8}$ " to be able to stuff between the dash and the instrument panel if you have AEROSPORT Carbon panel.

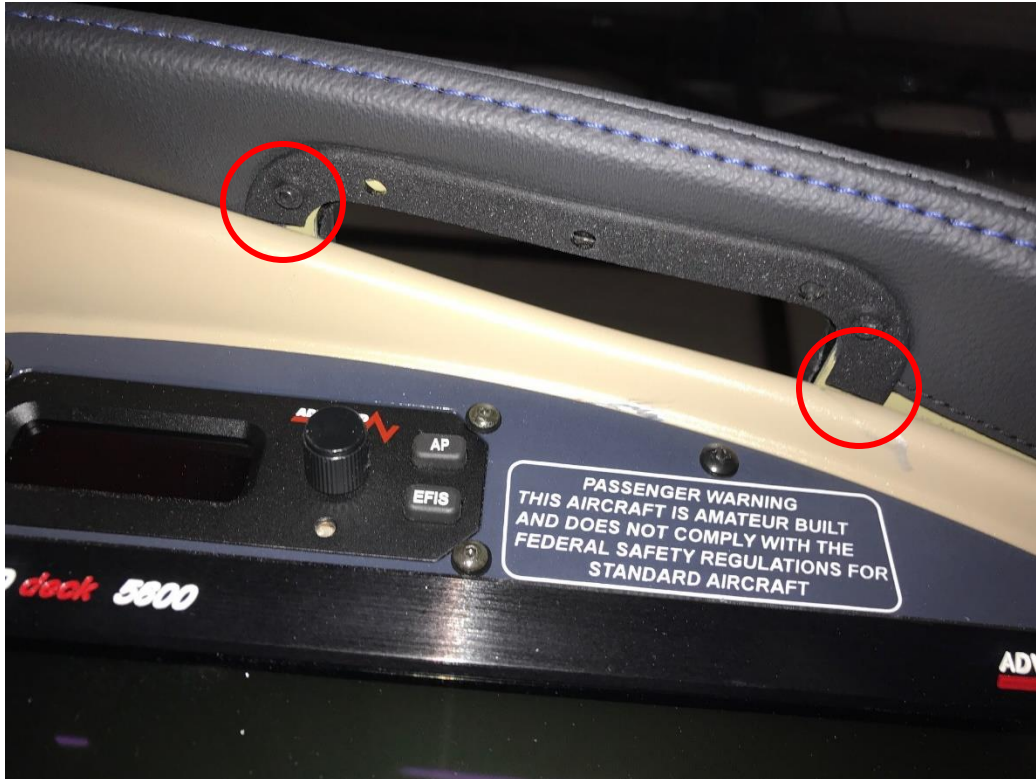


19. After trimming (only if necessary) use a plastic spatula to stuff the remainder of the cover under the dash and in between the instrument panel.
- a. Remember, that you previously applied Velcro (shown below in red) in step 13a to this location (on both sides) to aid you in holding down the glare shield cover while you place the remainder of the cover under the dash.





20. Place upper handle piece on top of glare shield cover by pushing the back of the handle with the notch onto the dash.
21. Place lower handle piece on the underside of glare shield cover.
22. You will need to trim the lower handle on the underside of the dash to fit against your instrument panel.



23. Using the supplied screws, screw together the two halves of the handle.
24. Repeat for other side.
25. These plastic pry bar kits work good for this. Amazon, Harbor freight, AutoZone

**Save up to 30% on select Castrol motor oil**

ment > Body Repair Tools > Upholstery & Trim Tools

by Amazinea  
 4 pcs Interior Car Dashboard Door Panel Molding Clip Trim Open Plastic Pry Tool Set Kit  
 Removal Installation For Honda Toyota Isuzu Hyundai  
 ★★★★★ 45 ratings

Price: **\$3.80** ✓prime FREE One-Day  
 New (2) from **\$3.80** ✓prime FREE Shipping

**Specifications for this item**

Part Number	A05-052-AZA-2
Brand Name	Amazinea
Color	Orange
EAN	9300663570669, 9300663570638
Material	plastic
UNSPSC Code	27140000

[See more product details](#)  
[Compare with similar items](#)

Roll over image to zoom in

Finished product:

