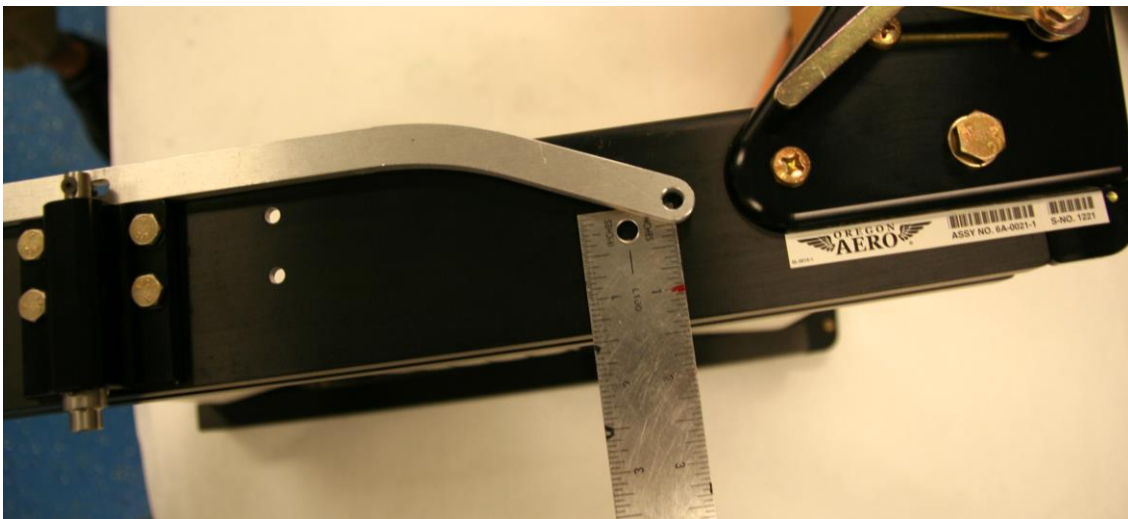
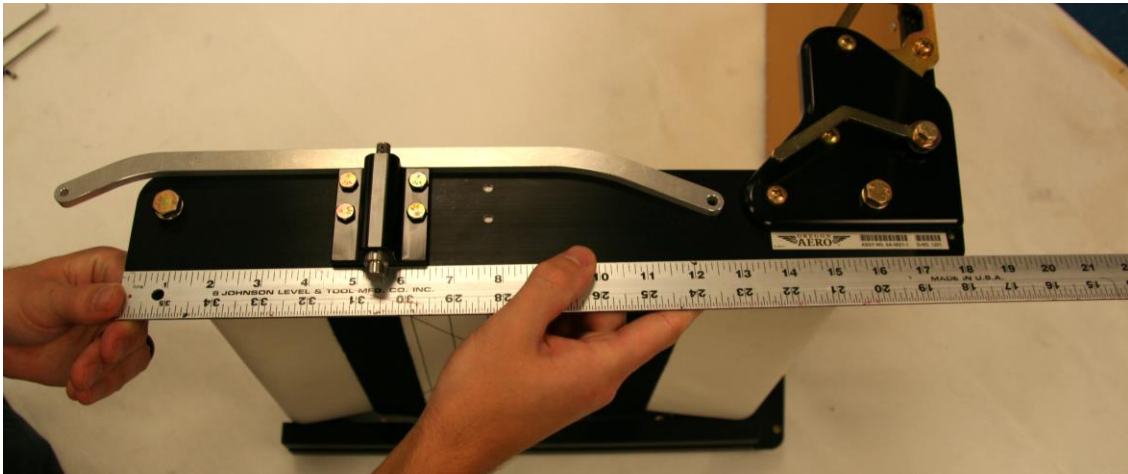


Aerosport Products Seat Lever

1. Drive out the roll pin on the OEM handle. At this point the stock handle will be removable. Take off the handle.
2. One hole will need to be drilled. It needs to be 12 1/2" from the front of the seat frame and 1 7/16" up from the bottom of the seat frame. Mark the hole and align with the lever to double check for accuracy, adjust accordingly. This is where the single pivot bolt will go. See pictures.



3. The pivot bolt will be 1/4" AN4-6 w/shoulder bolt and two washers.
4. After you have your hole drilled you can fasten the pivot bolt.
5. Replace the OEM handle in position and run the 3/4" 5-40 fastener through the stock handle and the seat lever and fasten with aircraft washers and a lock nut.
6. Check the function and adjust accordingly to eliminate any unwanted slop or binding.